

CEDAR HILLS

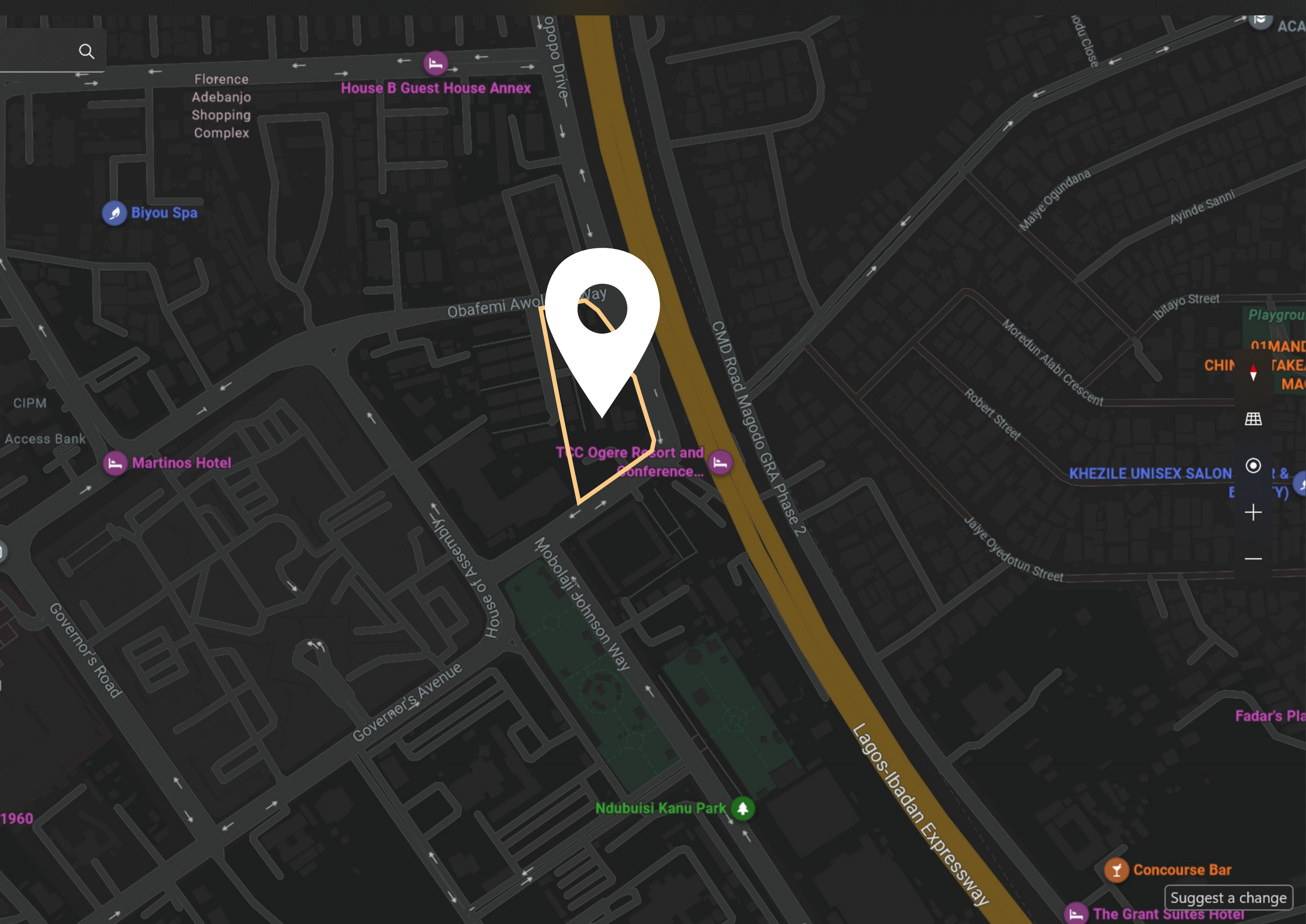
ALONG DR. NURUDEEN OLOWOPOPO WAY,
ALAUSA, IKEJA, LAGOS







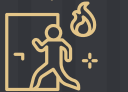








JOINT DEVELOPMENT BETWEEN
IBILE HOLDINGS LIMITED AND BEIGE SPACES LIMITED









 Smart Home Technology	 Elevator	 Swimming Pool	 High Speed Internet	 Adequate Parking Area
 Service Quarters*	 Fire Escape	 Gate House	 Gymnasium	 Fitted Kitchen
 CCTV	 24/7 Security	 All Rooms Ensuite	 Terrace Spaces	 Stable Power Supply

*Only some units have the service quarters

Welcome to Cedar Hills – Modern Living Redefined in the Heart of Lagos

Discover the essence of contemporary lifestyle at Cedar Hills, a meticulously designed apartment complex nestled in one of Lagos' most vibrant and accessible neighborhoods in Alausa, Ikeja. Combining architectural excellence with high quality finishes, this development offers an well-built standard of living for individuals and families seeking both comfort and convenience.

Property Highlights:

Spacious 2 & 3-Bedroom Apartments – Thoughtfully designed layouts with abundant natural light, high ceilings, and stylish interiors.

Top-Tier Construction Quality – Built to high standards with durable materials, modern infrastructure, and professional craftsmanship.

Modern Amenities – Fully equipped fitness center, swimming pool, 24/7 power supply, high-speed internet, and a secure children’s play area.

Unmatched Security – Gated community with CCTV surveillance, access control, and round-the-clock security personnel.

Prime Location – Easy access to major business hubs, top-rated schools, shopping centers, and entertainment venues in Lagos.

Whether you're a first-time homeowner, a savvy investor, or looking for a new place to call home, Cedar Hills offers a perfect blend of sophistication, safety, and serenity.

Experience elegant living. Embrace community. Elevate your lifestyle.



PROJECT LOCATION

- Johnson Jakande Tinubu Park
- Ikeja City Mall
- DUCHESS International Hospital,
- Lagos Marriott Hotel
- Magodo Phase II Residential Estate
- Vault Resto Lounge
- Lagos State Secretariat – Alausa
- Chrisland High School, Opebi, Ikeja
- Marwa Gardens Estate
- iFitness Gym



Johnson Jakande Tinubu Park



Ikeja City Mall



DUCHESS International Hospital



Lagos Marriott Hotel



Magodo Phase II Residential Estate



Vault Resto Lounge



Lagos State Secretariat – Alausa



Chrisland High School, Opebi, Ikeja



Marwa Gardens Estate



iFitness Gym

RECEPTION



GYM



2 BEDROOM UNIT - LIVING AREA



2 BEDROOM UNIT - KITCHEN



2 BEDROOM UNIT - MAIN BEDROOM



3 BEDROOM UNIT - LIVING AREA



3 BEDROOM UNIT - KITCHEN



3 BEDROOM UNIT - BEDROOM





24/7 CONCEIRGE IN EACH BLOCK

FINISHING UPGRADES AVAILABLE FOR ADDITIONAL PREMIUMS

PAYMENT TERMS - **25% DEPOSIT, BALANCE OVER 12 MONTHS**

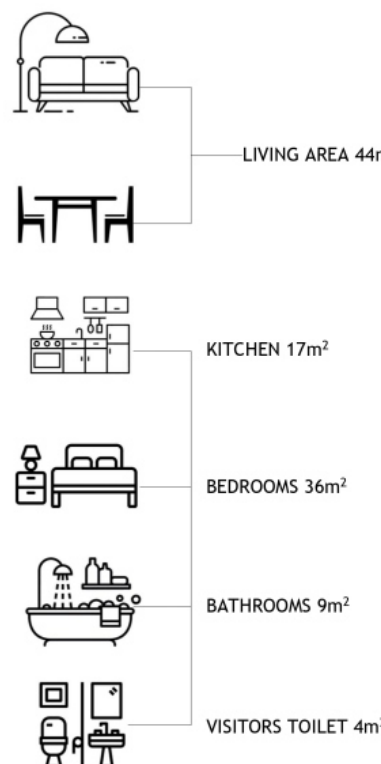
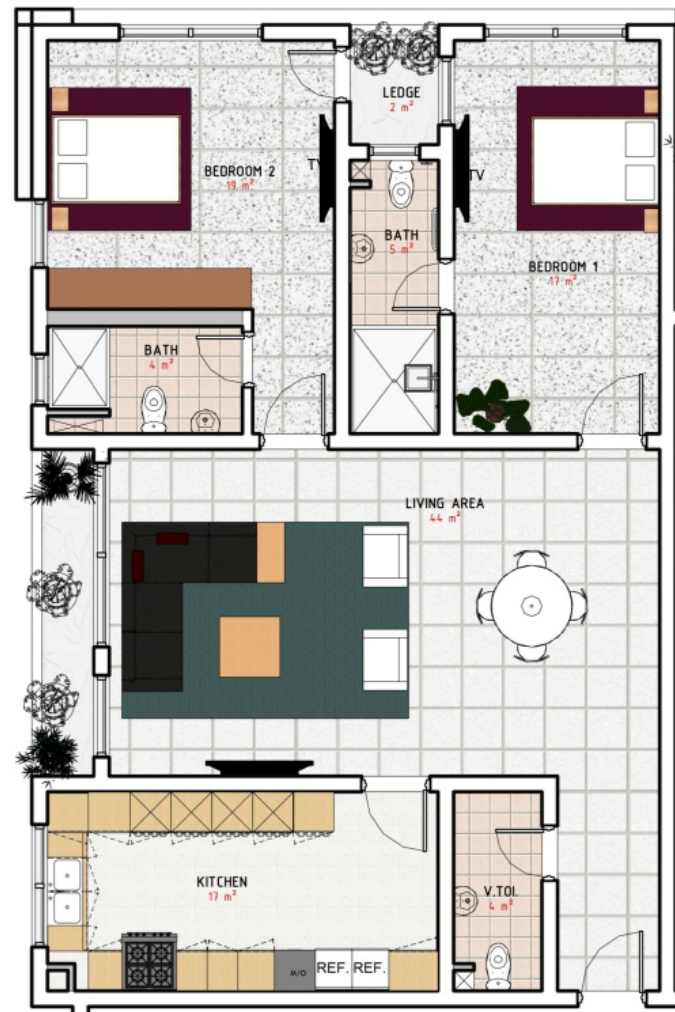
DELIVERY DATE - **DECEMBER 2026**

FOR DETAILS KINDLY CONTACT:  09118975585  sales@beigespaces.com



BLOCK 1 TWO BEDROOM TYPOLOGY 1

FLOOR PLAN



AXONOMETRIC VIEW



BLOCK 1 TWO BEDROOM TYPOLOGY 2

FLOOR PLAN



AXONOMETRIC VIEW

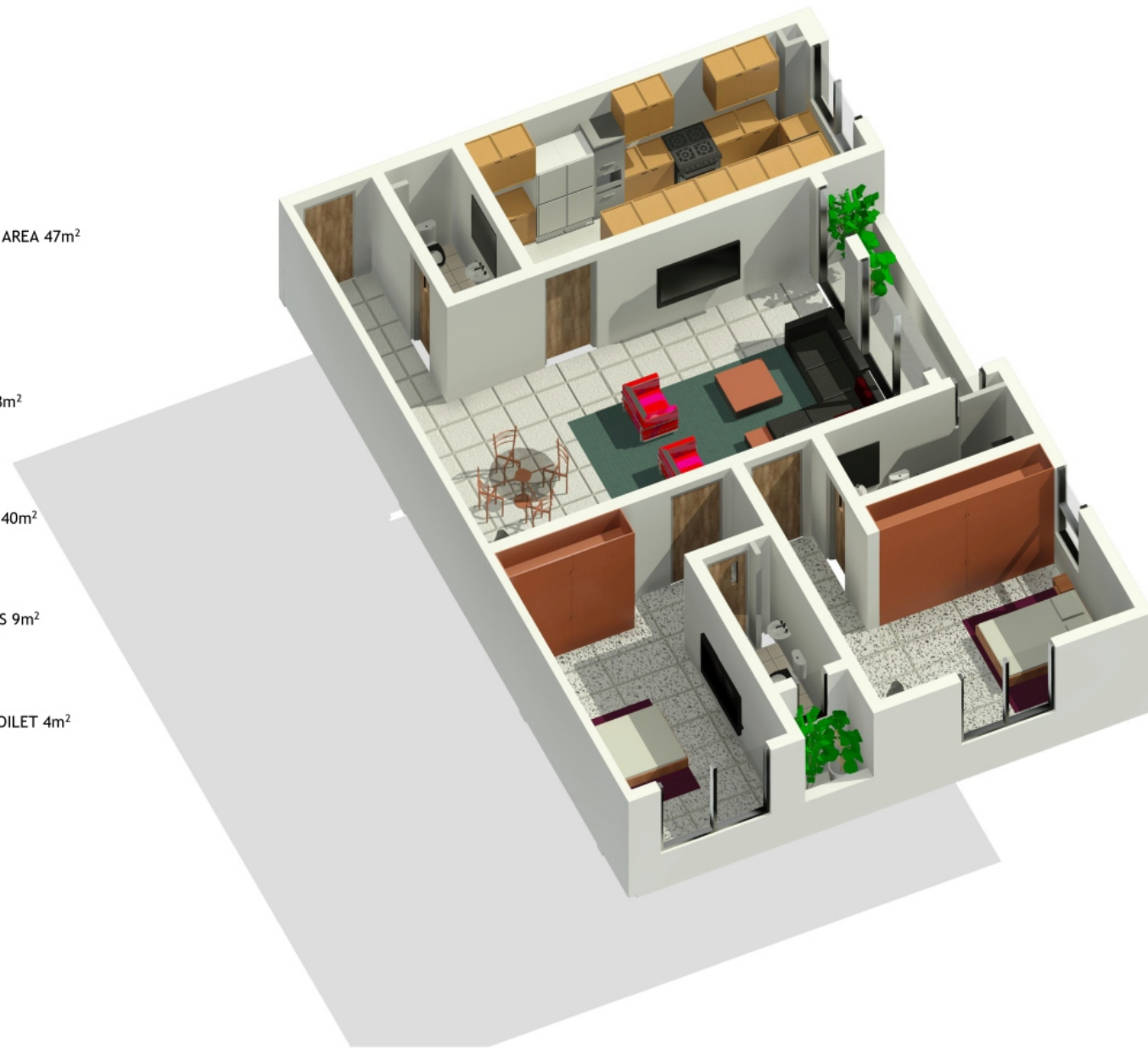


BLOCK 1 TWO BEDROOM TYPOLOGY 3

FLOOR PLAN

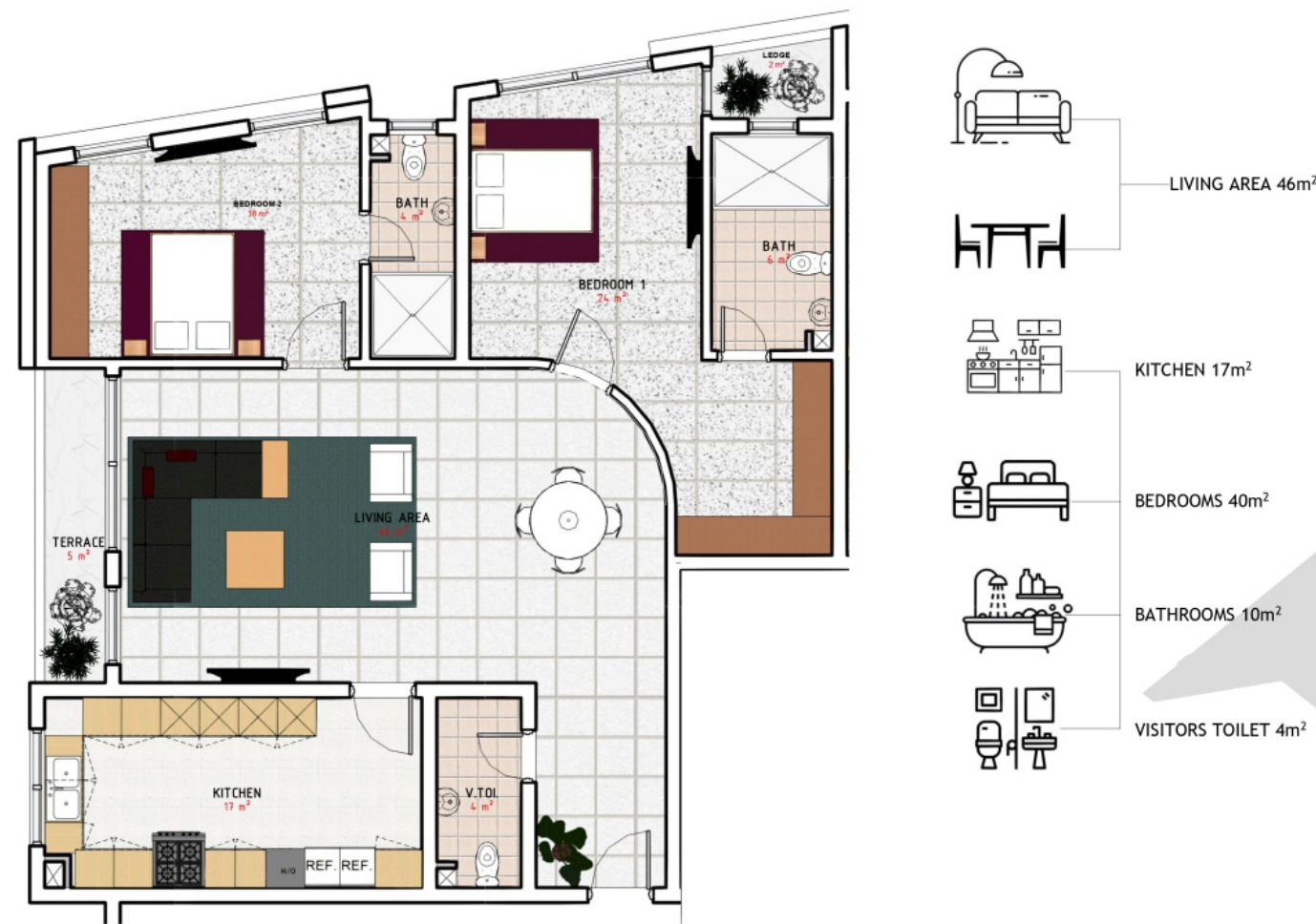


AXONOMETRIC VIEW



BLOCK 2 TWO BEDROOM TYPOLOGY 1

FLOOR PLAN

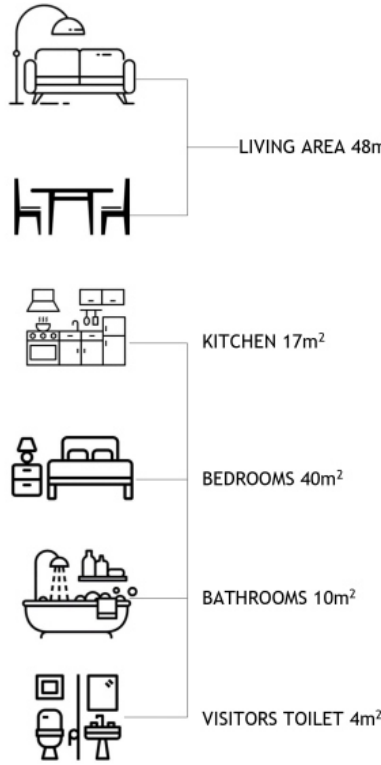


AXONOMETRIC VIEW



BLOCK 2 TWO BEDROOM TYPOLOGY 2

FLOOR PLAN

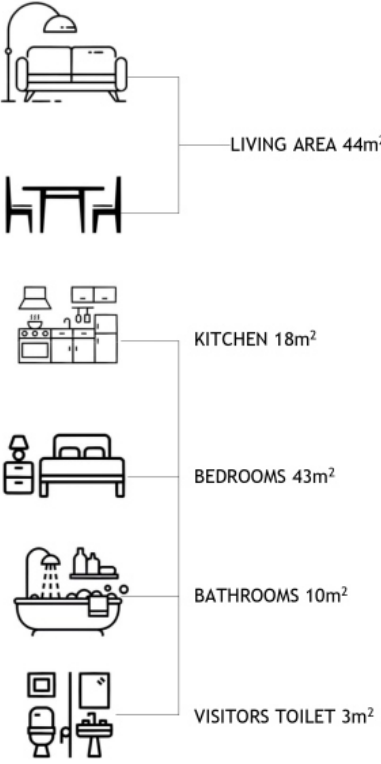


AXONOMETRIC VIEW



BLOCK 2 TWO BEDROOM TYPOLOGY 3

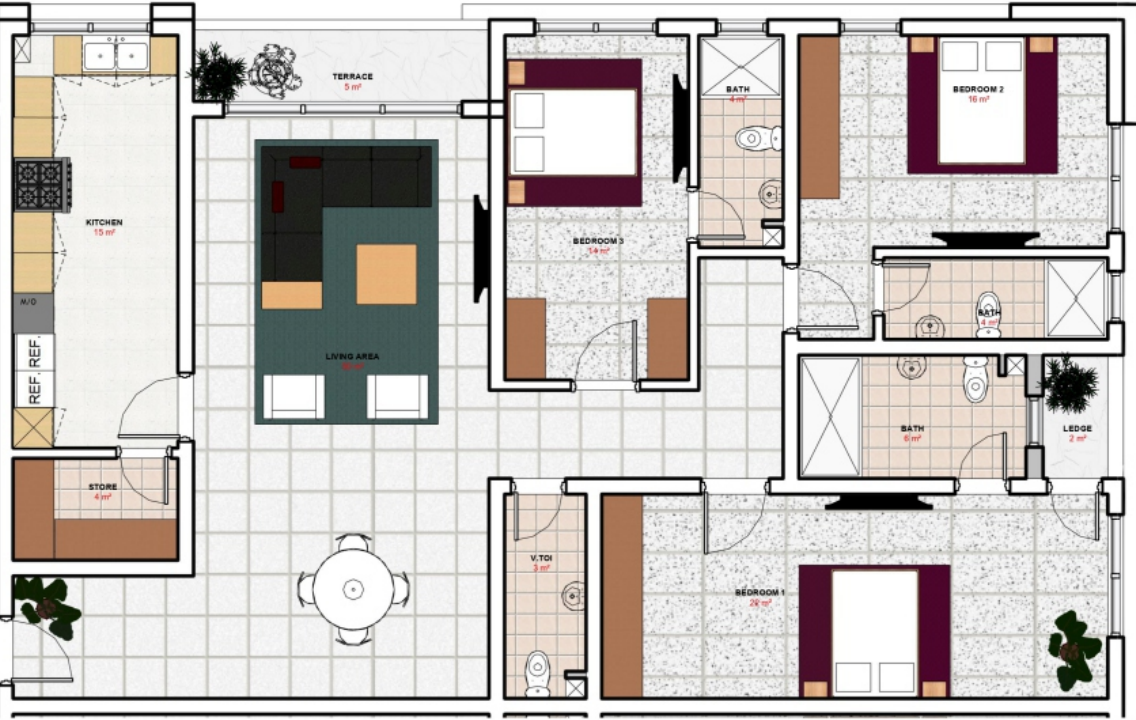
FLOOR PLAN



AXONOMETRIC VIEW



FLOOR PLAN



- LIVING AREA 50m²
- KITCHEN 15m²
- BEDROOMS 52m²
- BATHROOMS 14m²
- VISITORS TOILET 3m²
- STORE 4m²

AXONOMETRIC VIEW



BLOCK 4 THREE BEDROOM

FLOOR PLAN



- LIVING AREA 50m²
- KITCHEN 13m²
- BEDROOMS 62m²
- BATHROOMS 15m²
- VISITORS TOILET 3m²
- STORE 5m²

AXONOMETRIC VIEW



BLOCK 4 TWO BEDROOM TYPOLOGY 2

FLOOR PLAN

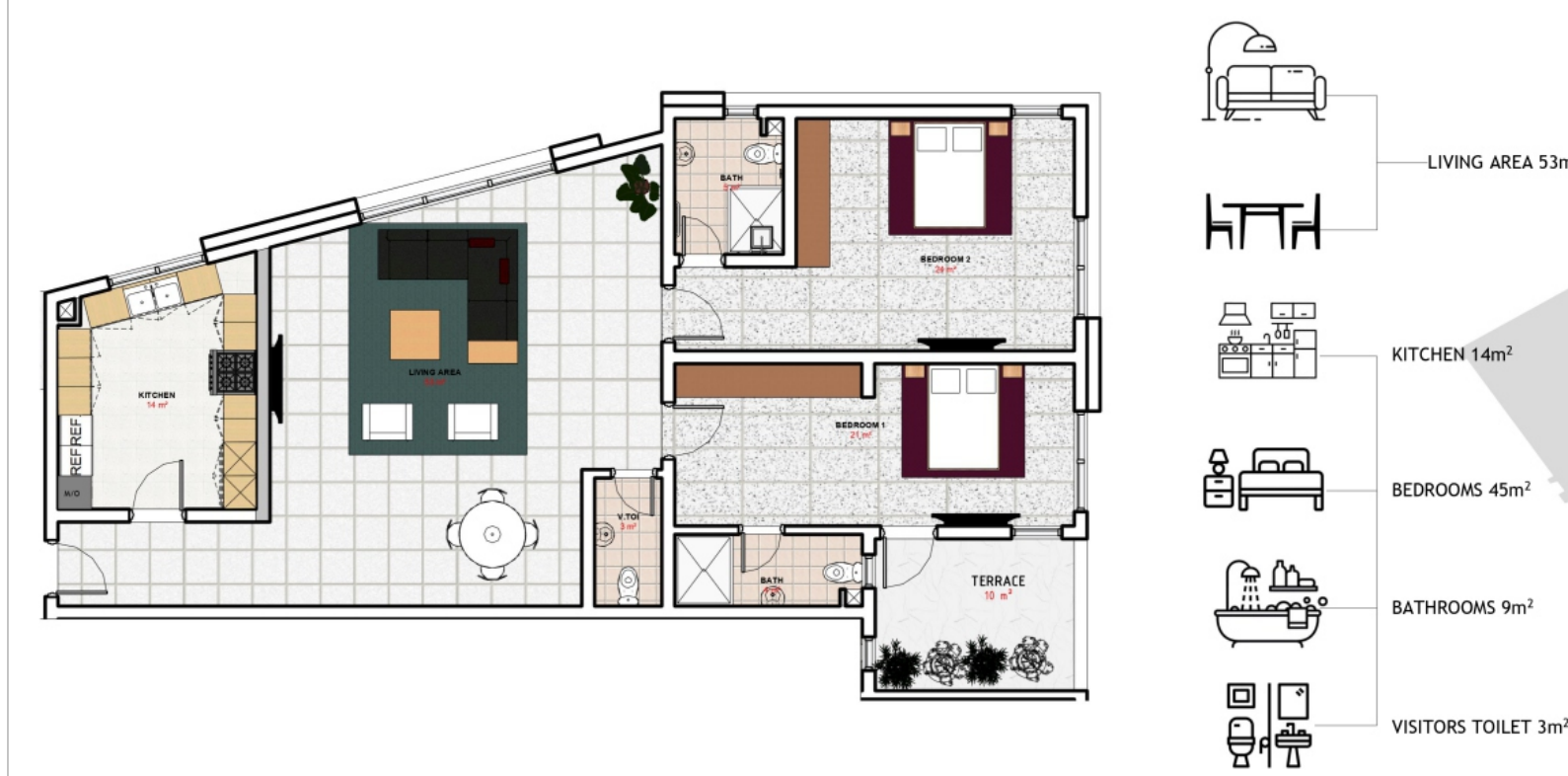


AXONOMETRIC VIEW



BLOCK 4 TWO BEDROOM TYPOLOGY 2

FLOOR PLAN



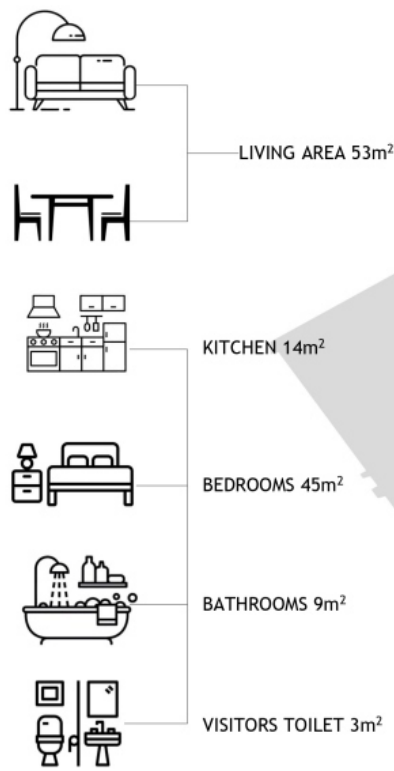
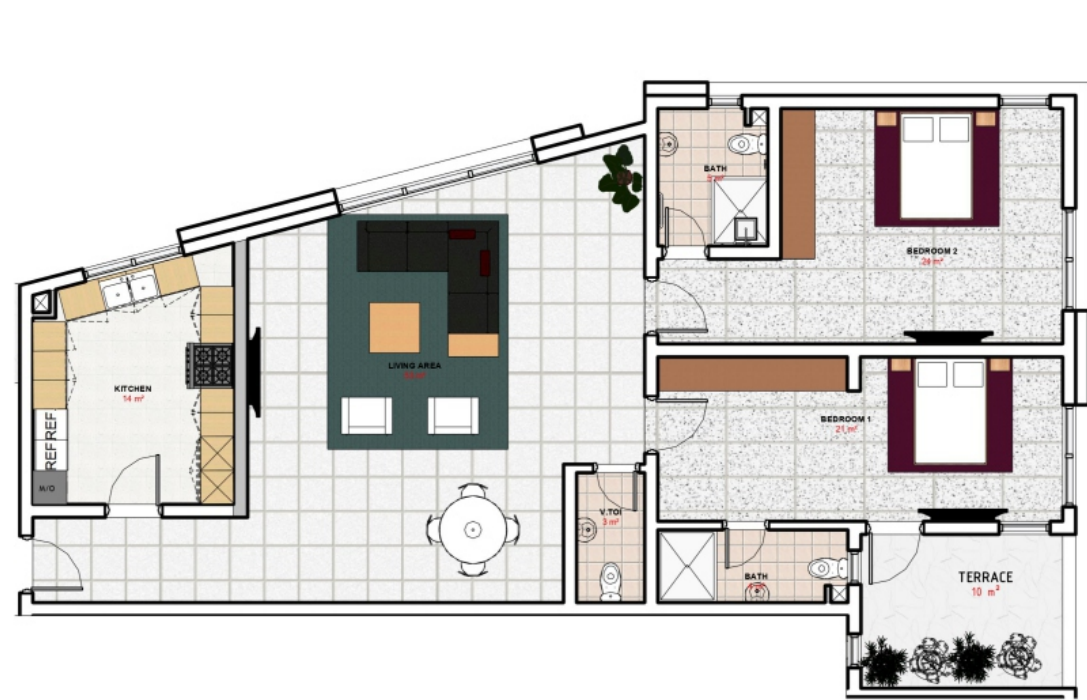
AXONOMETRIC VIEW



BLOCK 4 TWO BEDROOM TYPOLOGY 2

FLOOR PLAN

AXONOMETRIC VIEW



236A ETI-OSA WAY DOLPHIN ESTATE